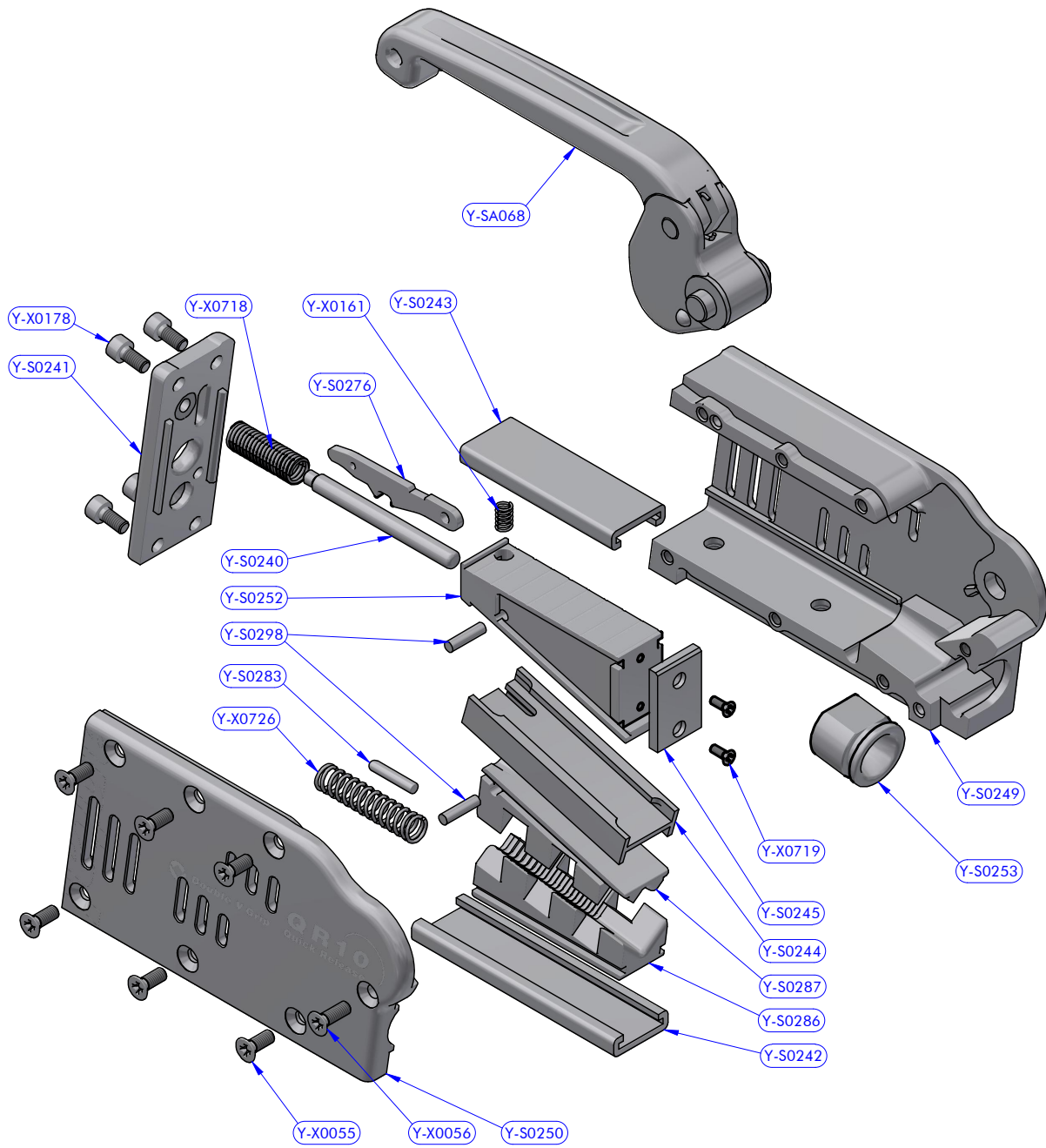


PART LIST			
CODE	DESCRIPTION	MATERIAL	Q.TY
Y-SA028	Base mounting kit	Various	1
Y-SA031	Common part assy		1



Cod.Y-SA031  
Common part assy QR10

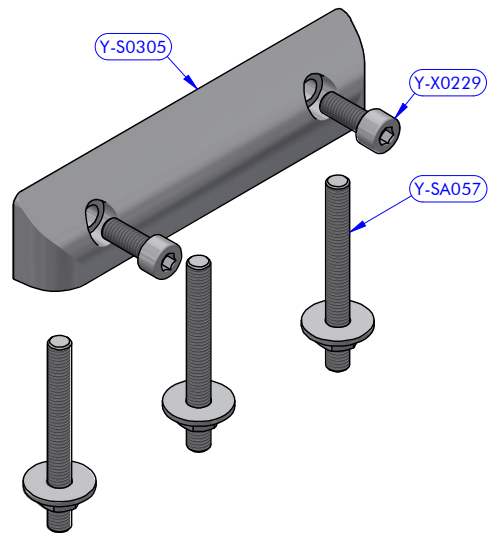
PART LIST - Y-SA031			
CODE	DESCRIPTION	MATERIAL	Q.TY
Y-S0240	Pin	S.Steel	1
Y-S0241	Rear cover	Aluminium	1
Y-S0242	Guide	Polietilene	1
Y-S0243	Guide	Polietilene	1
Y-S0244	Insert	Polietilene	1
Y-S0245		Composite fibre	1
Y-S0249	Body	Aluminium	1
Y-S0250	Cheekplate	Aluminium	1
Y-S0252	Wedge	Aluminium	1
Y-S0253	Ring	Aluminium	1
Y-S0276	Command lever	S.Steel	1
Y-S0283	Free line mark	Aluminium	1
Y-S0286	Lower jaw	Aluminium	1
Y-S0287	Upper jaw	Aluminium	1
Y-S0298	Cylinder pin	S.Steel	2
Y-SA068	Lever assy	Various	1
Y-X0055	Screw	S.Steel	6
Y-X0056	Screw	S.Steel	1
Y-X0178	Screw	S.Steel	4
Y-X0718	Compression spring	S.Steel	1
Y-X0719	Screw	S.Steel	2
Y-X0726	Compression spring	S.Steel	1
Y-X0161	Compression spring	S.Steel	1



Clutch QR10 Side mounting version  
DESCRIPTION

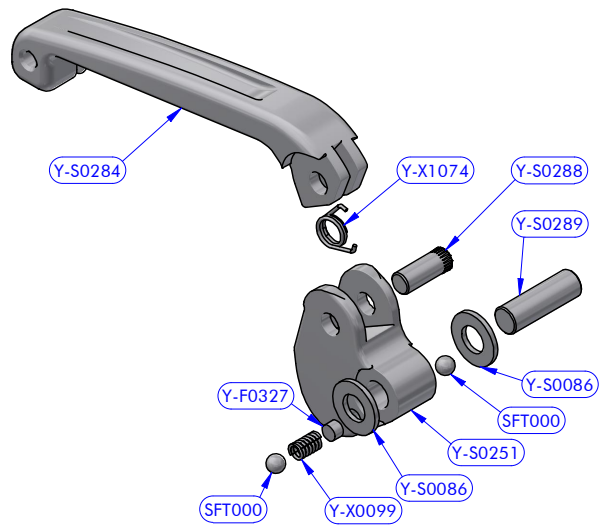
**506.103**  
MODEL CODE

04/09/2023  
DATE  
18050300  
DWG N.  
REV.  
2 / 3  
PG.



Cod.Y-SA028  
Base horizontal mounting kit QR10

PART LIST - Y-SA028			
CODE	DESCRIPTION	MATERIAL	Q.TY
Y-S0305	Base	Aluminium	1
Y-SA057	Fixing screw kit	S.Steel	3
Y-X0229	Screw	S.Steel	2



Cod.Y-SA068  
Lever assy QR10

PART LIST - Y-SA068			
CODE	DESCRIPTION	MATERIAL	Q.TY
SFT000	Torton ball	Torton	2
Y-F0327	Cylinder pin	Teflon	1
Y-S0086	Resin washer	POM-C	2
Y-S0251	Cam	Aluminium	1
Y-S0284	Lever	Aluminium	1
Y-S0288	Cylinder pin	S.Steel	1
Y-S0289	Cylinder pin	S.Steel	1
Y-X0099	Compression spring	S.Steel	1
Y-X1074	Torsion spring	S.Steel	1

**antal**

DESCRIPTION

Clutch QR10 Side mounting version

**506.103**

MODEL CODE

04/09/2023

DATE

REV.

18050300

DWG N.

3 / 3

PG.